



*3 Dairy Farm Lane in Southborough*

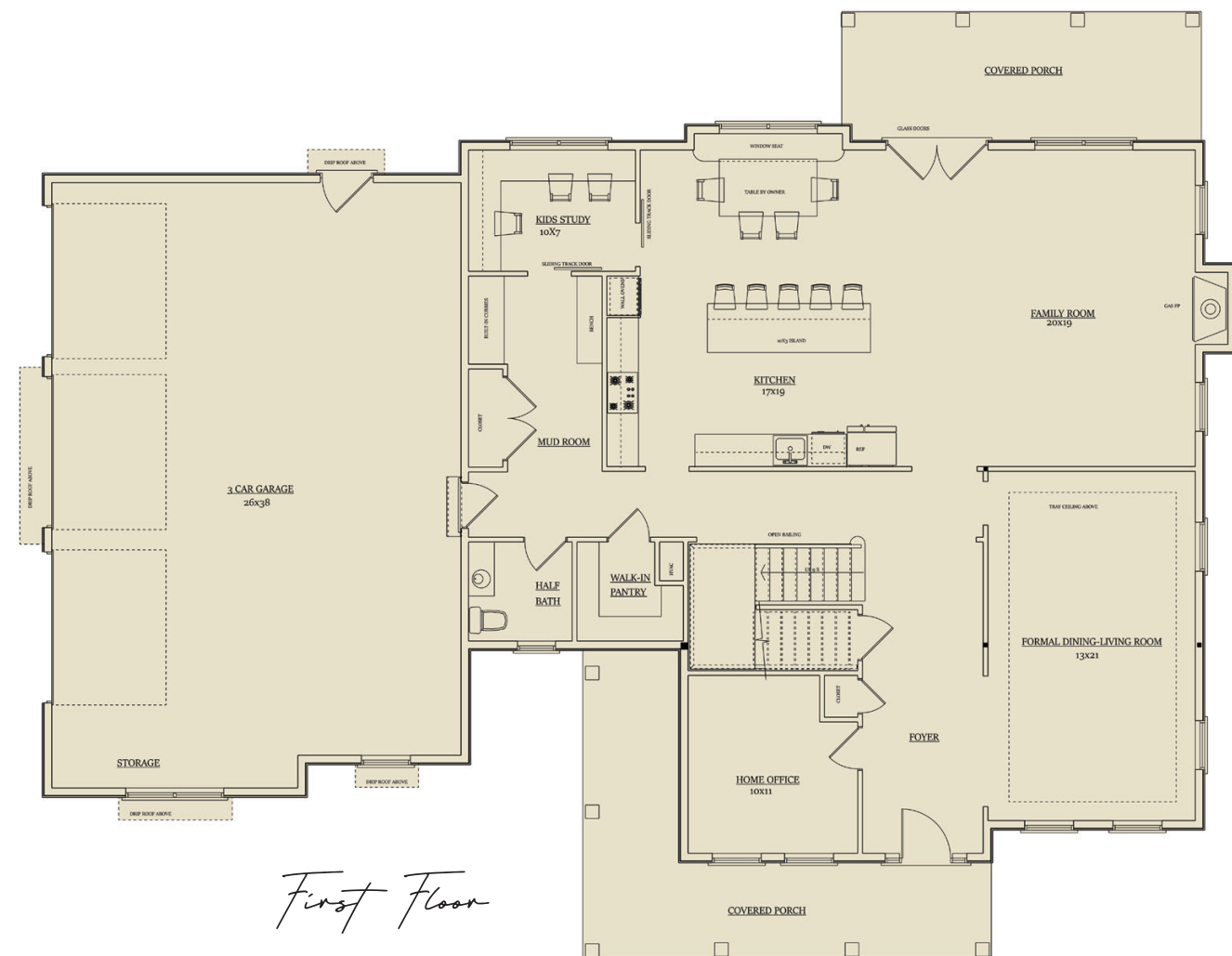
3,935 SF / 4 BEDROOMS / 3.5 BATHROOMS / 3 CAR GARAGE



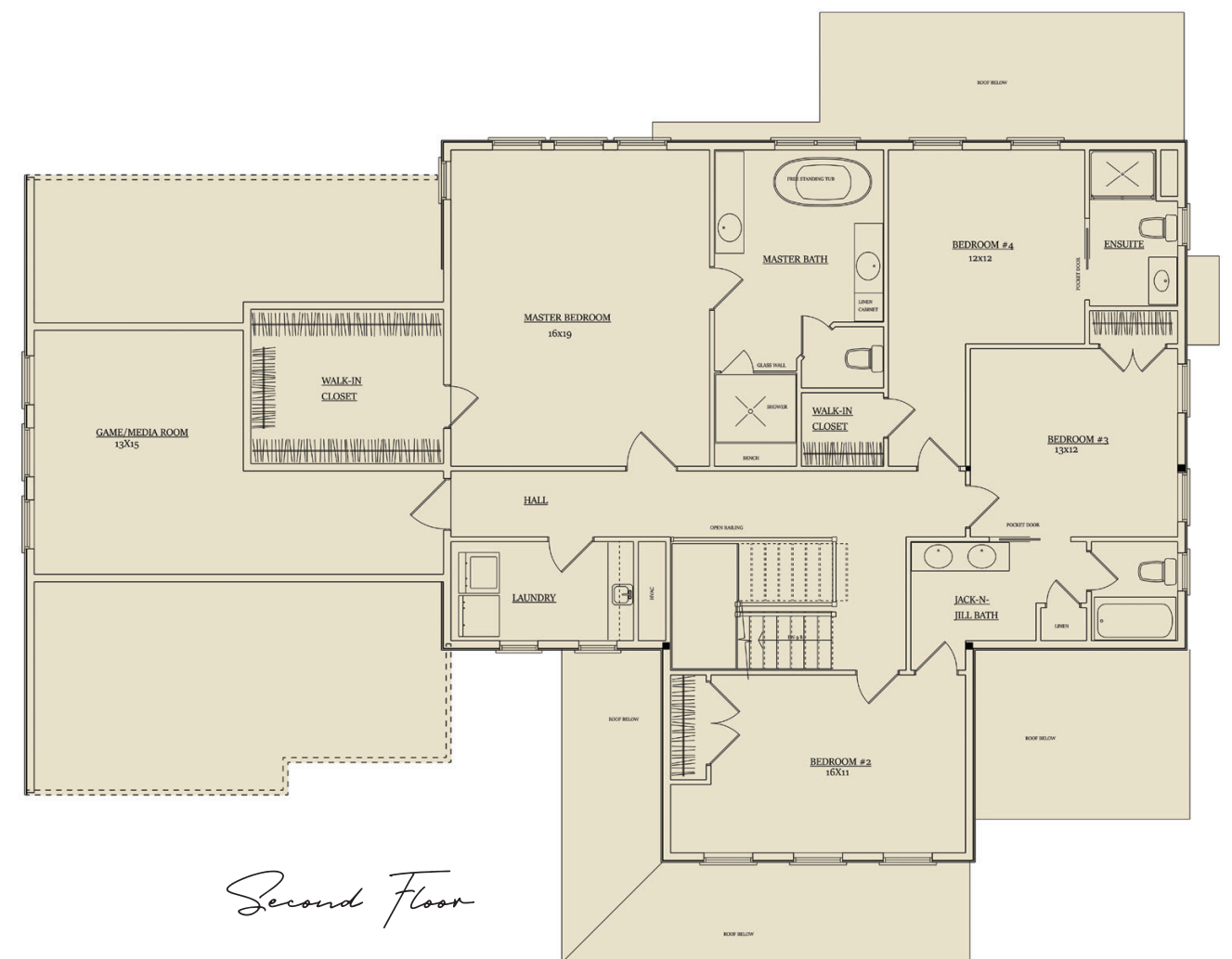


# 3 Dairy Farm Lane in Southborough

3,935 SF / 4 BEDROOMS / 3.5 BATHROOMS / 3 CAR GARAGE



First Floor



Second Floor

CHESTNUTMEADOWSOUTHBOROUGH.COM 877-709-9744

This handout is for marketing purposes only. Availability of homes, floorplans, square footage, dimensions, specifications, materials, and exterior elevation renderings are estimates only and are subject to change at any time without further notice or obligation. Actual construction may vary according to elevations, construction variance, availability of materials, and/or mechanical or structural requirements; and do not take into account finishes and options selected. 🏠 Equal Housing Opportunity. © 2019 Chestnut Meadow and Habitech Communities. Lot 11 Plan: 11/19/19



HABITECH  
COMMUNITIES

WE'LL SHOW YOU THE WAY HOME

MARKETED BY  
**STREAMLINE**  
COMMUNITIES