



ARTISTIC RENDERING ONLY / ELEVATION AND FINISHES SUBJECT TO CHANGE



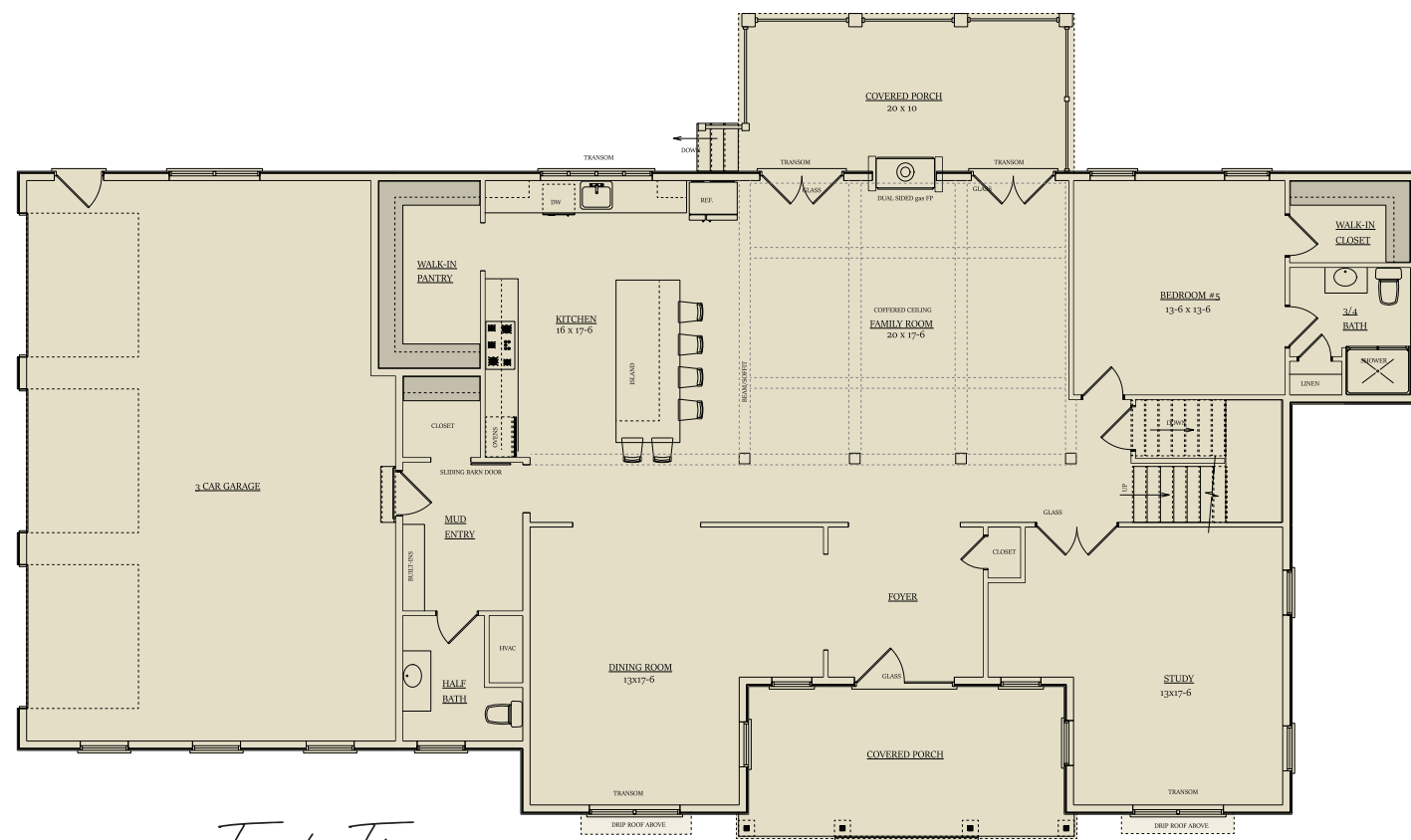
9 Dairy Farm Lane in Southborough

4,557 SF / 5 BEDROOMS / 4.5 BATHROOMS / 3 CAR GARAGE

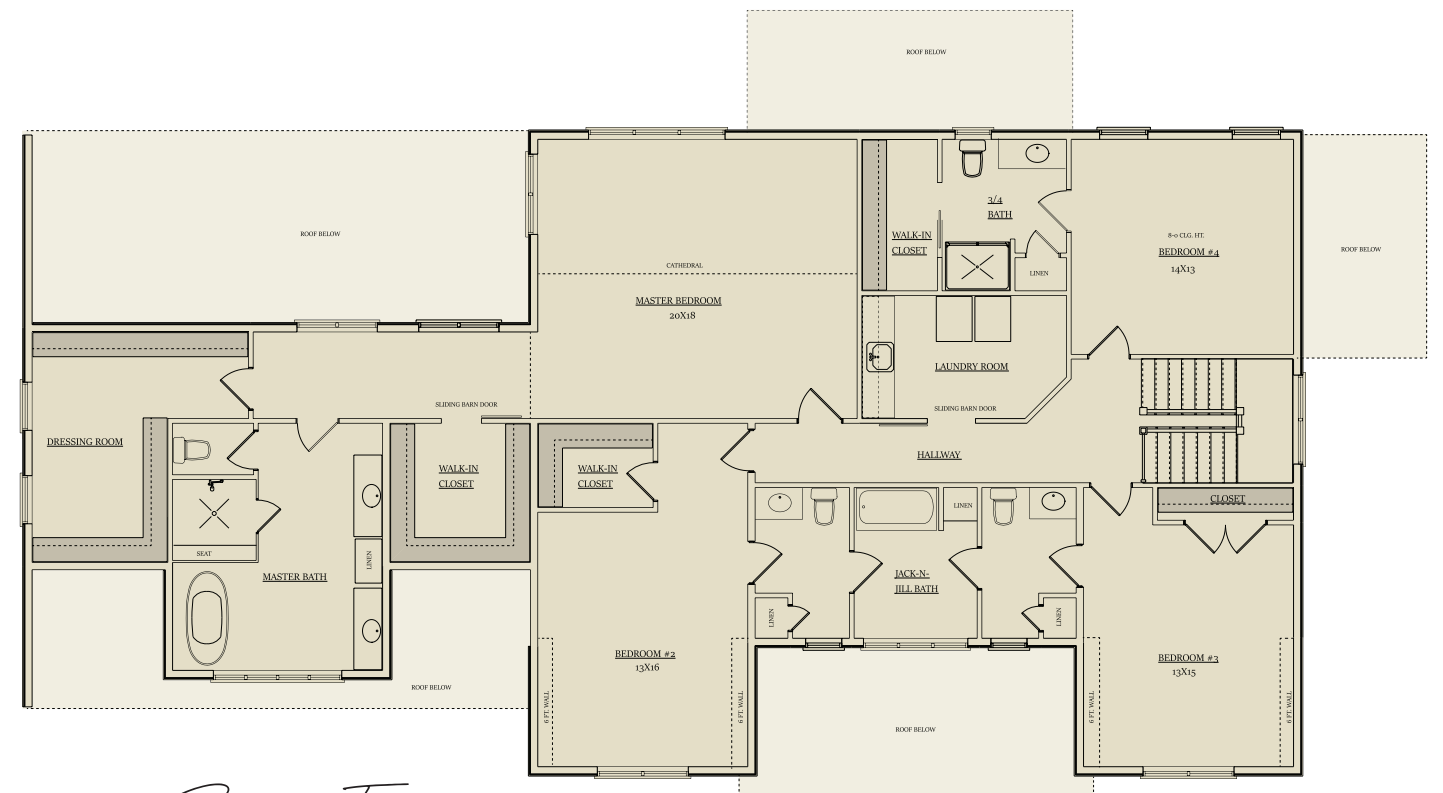


9 Dairy Farm Lane in Southborough

4,557 SF / 5 BEDROOMS / 4.5 BATHROOMS / 3 CAR GARAGE



First Floor



Second Floor

DESIGNED BY THE DRAWING BOARD, INC.

CHESTNUTMEADOWSOUTHBOROUGH.COM 877-709-9744

This handout is for marketing purposes only. Availability of homes, floorplans, square footage, dimensions, specifications, materials, and exterior elevation renderings are estimates only and are subject to change at any time without further notice or obligation. Actual construction may vary according to elevations, construction variance, availability of materials, and/or mechanical or structural requirements; and do not take into account finishes and options selected. Equal Housing Opportunity. © 2019-2021 Chestnut Meadow and Habitech Communities. Lot 8 Plan: 6/15/21



HABITECH
COMMUNITIES

WE'LL SHOW YOU THE WAY HOME

MARKETED BY
STREAMLINE
COMMUNITIES