



CROFT COMMON



THE AMESBURY

2,958 sqft • 4 Bedrooms • 2½ Baths • 2 Car Attached Garage



HABITECH
COMMUNITIES

WE'LL SHOW YOU THE WAY HOME

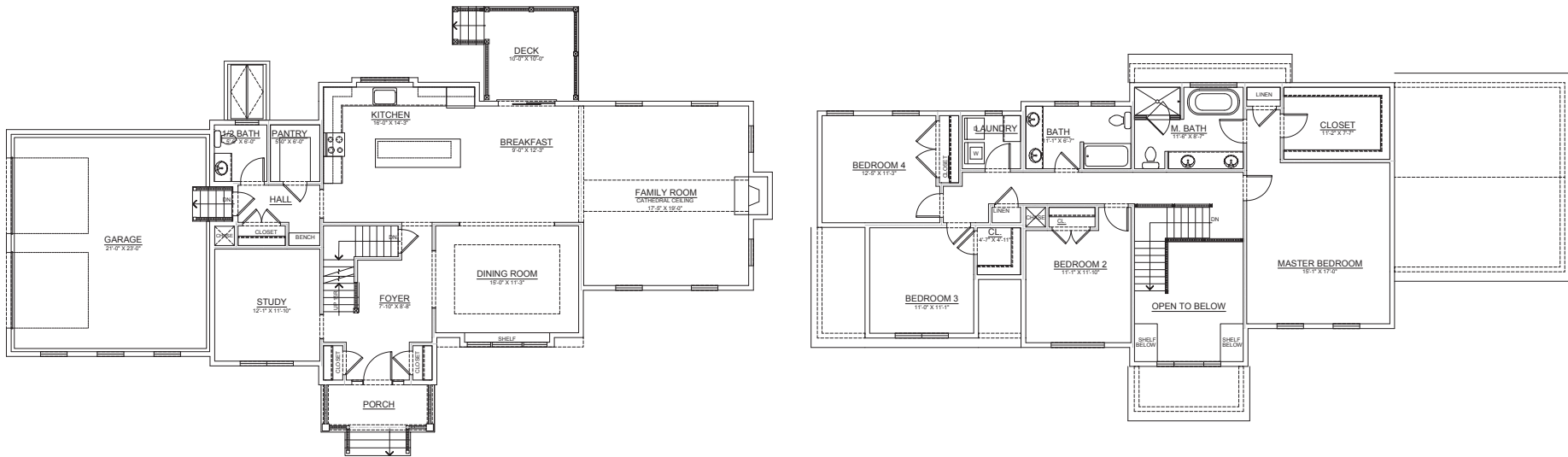
CROFTCOMMONLITTLETON.COM 888-698-0299  



THE AMESBURY

2,958 sqft • 4 Bedrooms • 2½ Baths • 2 Car Attached Garage

CROFT COMMON



This handout is for marketing purposes only. Floorplans, square footage, dimensions, specifications, materials, etc. are estimates only; actual construction may vary according to elevation, construction variance, availability of materials, and/or mechanical or structural requirements; and do not take into account finishes and options selected. Floorplans, square footage, dimensions, specifications, materials, and availability of homes are subject to change at any time without further notice or obligation. © 2020 Croft Common and Habitech Communities. Updated 102720.

CROFTCOMMONLITTLETON.COM 888-698-0299  

MARKETED BY
STREAMLINE
COMMUNITIES