

A

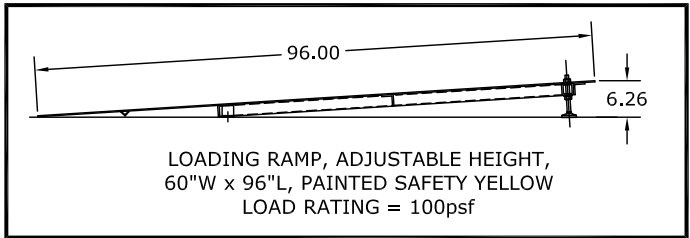
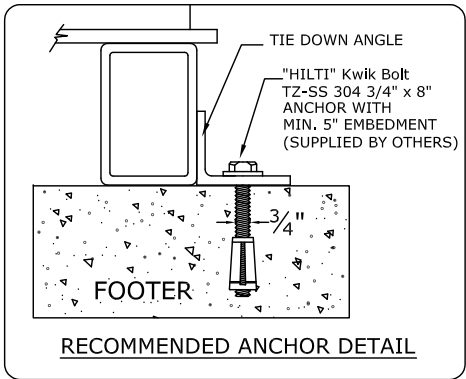
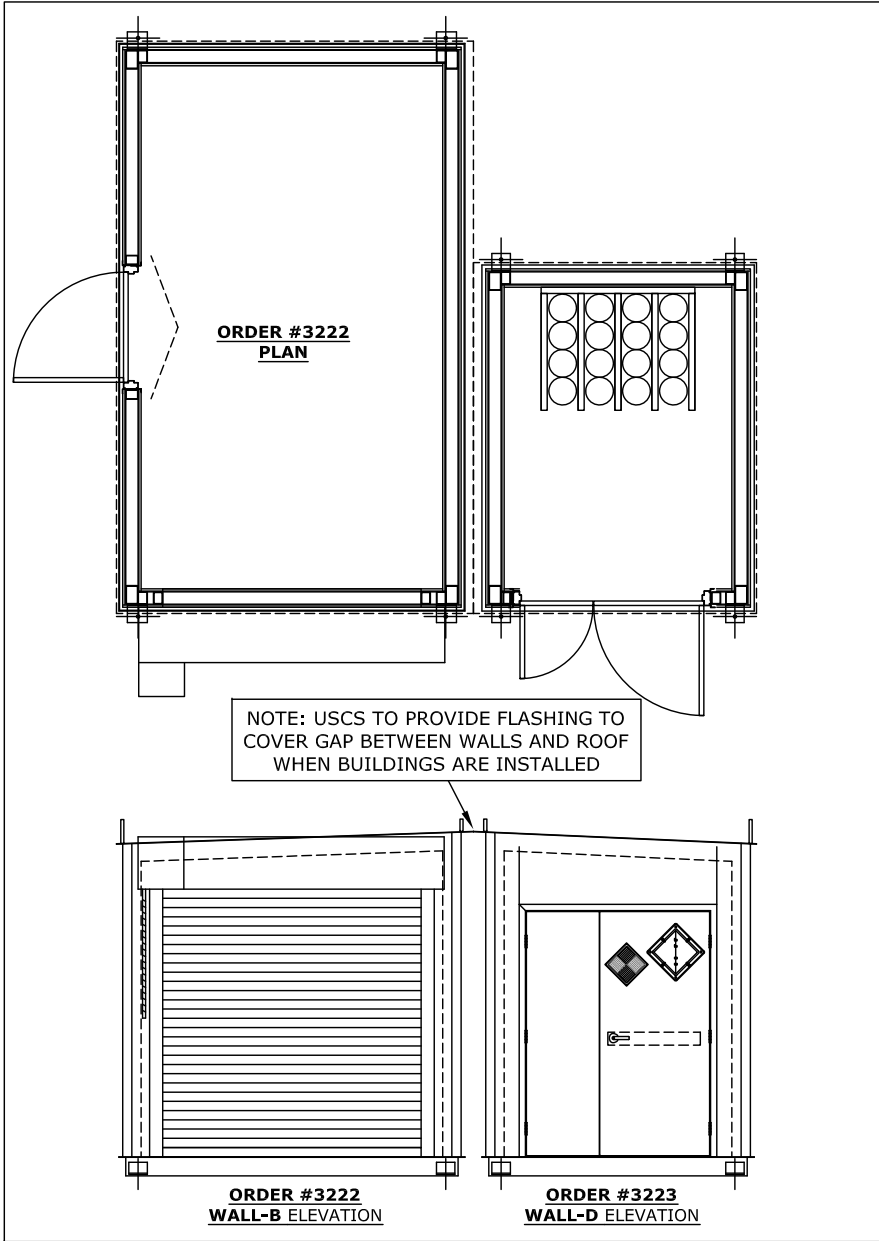
B

C

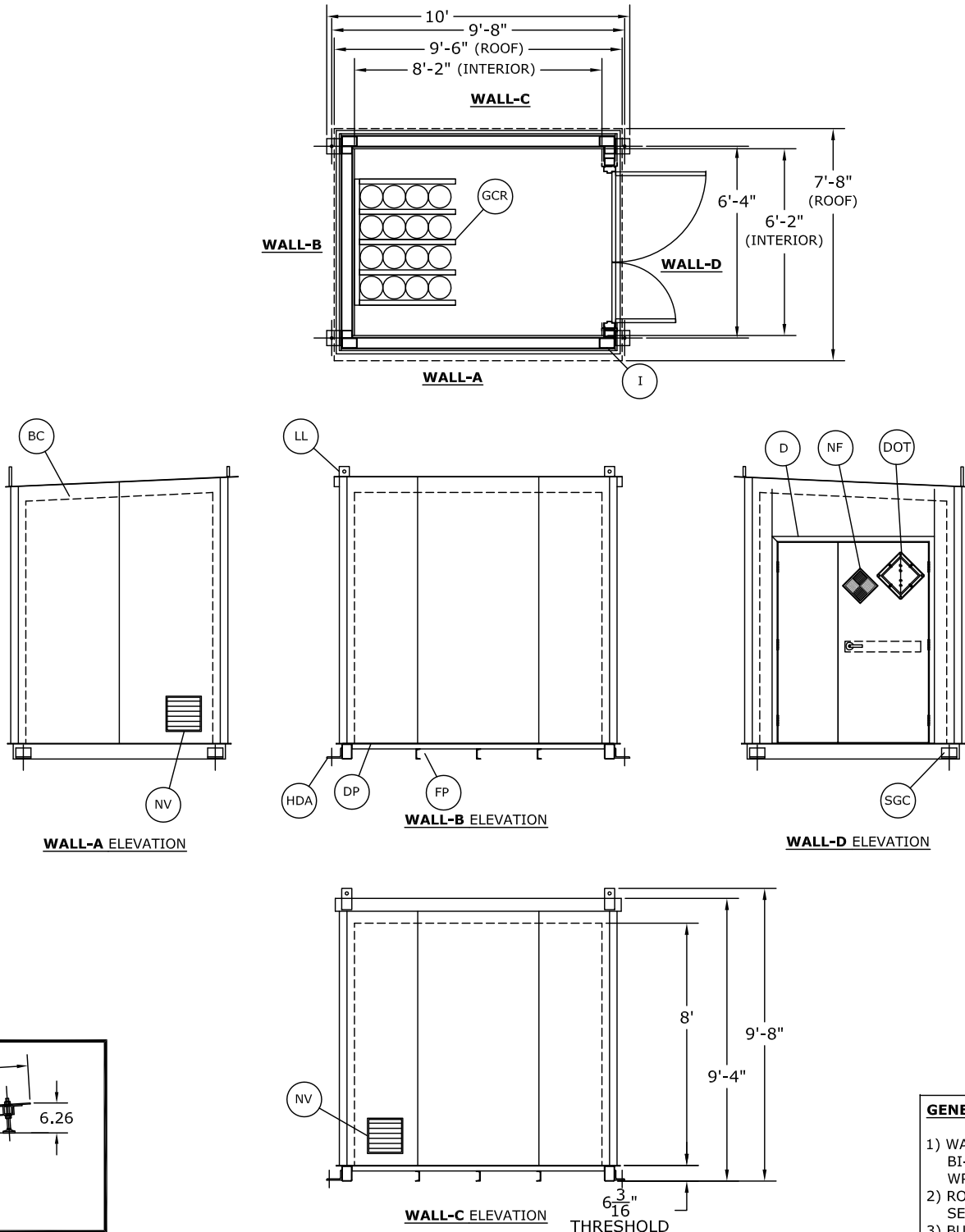
D

LEGEND

- DOT- DEPARTMENT OF TRANSPORTATION FLIP CHART PLACARD (1)
NF- NATIONAL FIRE PROTECTION ASSOCIATION 704 SIGN (1)
HDA- HOLD DOWN ANGLE (4)
FP- FORKLIFT POCKETS
SGC- STATIC GROUND CONNECTOR
BC- BUILDING COLOR: BLEACHED BONE
NV- NATURAL VENTILATION w/ 3HR FIRE DAMPER (2)



- D- 60"W x 80" DOUBLE LEAF DOOR, 3HR FIRE RATED W/ PH (1)
I- INSULATION_ ROOF: R13 BATT IN CAVITY
WALL: R12 MINERAL WOOL IN CAVITY
DP- 3/16" DIAMOND PLATE FLOORING (SMOOTH SIDE UP)
GCR- GAS CYLINDER RACK (16 CYLINDERS TOTAL)
R- ACCESS RAMP, 60"W x 96"L (CUSTOM) (1)
LL- LIFTING LUG (4)



GENERAL NOTES:

- 1) WALL CONSTRUCTION: 2HR BI-DIRECTIONAL PER USCS TEST WP-2420 @ NGC TESTING
- 2) ROOF CONSTRUCTION: 1HR PER IBC SECTION 722
- 3) BUILDING WEIGHT: 7,300lb

REVISIONS				
CHANGES BY	REV	DESCRIPTION	DATE	APPROVED

ESTIMATED SHIPPING DIMENSIONS:

LENGTH = 10'-2"
DEPTH = 7'-10"
HEIGHT = 9'-9"

GENERAL NOTES:
1- ALL MATERIAL AND WORKMANSHIP SHALL CONFORM WITH THE REQUIREMENTS OF THE LATEST REVISION OF THE UBC, IBC AND STATE BUILDING CODES. DESIGN ACCORDING TO AISC, ASD, AND WITH ANSI/ ASCE 7.
2- NO LOADS OTHER THAN THOSE GIVEN UNDER "DESIGN DATA" BELOW SHALL BE IMPOSED ON THE "STRUCTURE."
DESIGN DATA (MATERIALS)
STRUCTURAL QUALITY ASTM SPECIFICATION, A36 ER70S WELDING WIRE.
DESIGN DATA IN ACCORDANCE WITH ANSI/ ASCE 7:10

MINIMUM ROOF LIVE LOAD (PSF) = 40
Pg: GROUND SNOW LOAD (PSF) = 50
V : WIND VELOCITY (MPH) = 120
SEISMIC DESIGN CATEGORY : C

FINAL FOUNDATION DESIGN TO BE SUPPLIED BY OTHERS

ALL DIMENSIONS SHOWN ON THIS PRINT ARE FOR YOUR REFERENCE. TOLERANCES ARE ±1" UNLESS OTHERWISE NOTED.

DATE: 08/10/20

DRAWN BY: JAD

USAF EGLIN AFB

108 EGLIN BLVD, BLDG 600/SF
EGLIN AFB, FL 32542

MODEL NO. FLO907
SF QUOTE NO. Q-01782
GS QUOTE NO. 0008224
ORDER NO. 3223

APPROVAL PRINT

THIS PRINT IS CONFIRMATION OF YOUR ORDER AND ILLUSTRATES THE APPROXIMATE LOCATION OF FACTORY INSTALLED OPTIONS. CUSTOMER APPROVAL IS REQUIRED BEFORE MANUFACTURING CAN BEGIN.
ANY CHANGES MADE AFTER CUSTOMER APPROVAL MAY INCUR EXTRA CHARGES AND DELAY ESTIMATED DELIVERY.

SIGNATURE DATE

ESTIMATED SITE READY DATE

LEGAL NOTE

THIS DRAWING IS THE PROPERTY OF U.S. CHEMICAL STORAGE, LLC. ANY DUPLICATION OF THIS DRAWING IN WHOLE OR IN PART IS STRICTLY FORBIDDEN. ANYONE DOING SO WILL BE PROSECUTED UNDER THE FULL EXTENT OF THE LAW.

THIS ORDER IS SUBJECT TO U.S. CHEMICAL STORAGE LLC'S TERMS AND CONDITIONS WHICH ARE LOCATED AT

<https://www.uschemicalstorage.com/all-about-chemical-storage-expert-info/literature/>

THIS SIGNED GENERAL ARRANGEMENT DRAWING AND U.S. CHEMICAL STORAGE LLC1 TERMS AND CONDITIONS SUPERSEDES ALL OTHER DOCUMENTATION FOR THE NOTED PROJECT.

CUSTOMER IS RESPONSIBLE FOR REVIEWING DESIGN WITH THEIR LOCAL CODE AUTHORITIES TO ENSURE DESIGN AND INCLUDED COMPONENTS ARE ACCEPTABLE.

REVIEW, APPROVALS, STAMPED PLANS/CALCULATIONS & FACTORY INSPECTIONS BY REGISTERED DESIGN PROFESSIONALS, THIRD PARTY AGENCIES, OR STATE/LOCAL CODE ENFORCEMENT AGENCIES ARE NOT INCLUDED UNLESS NOTED ON THIS GENERAL ARRANGEMENT DRAWING.



MANUFACTURING FACILITY
1806 River Street, Hwy. 268 W.
Wilkesboro, NC 28697